

PART NE 1/4 SEC. 22, T5N. R1W. S.L.B. & M.  
BYBEE ESTATES SUBDIVISION

305

TAXING UNIT: 245

SOUTH OGDEN CITY

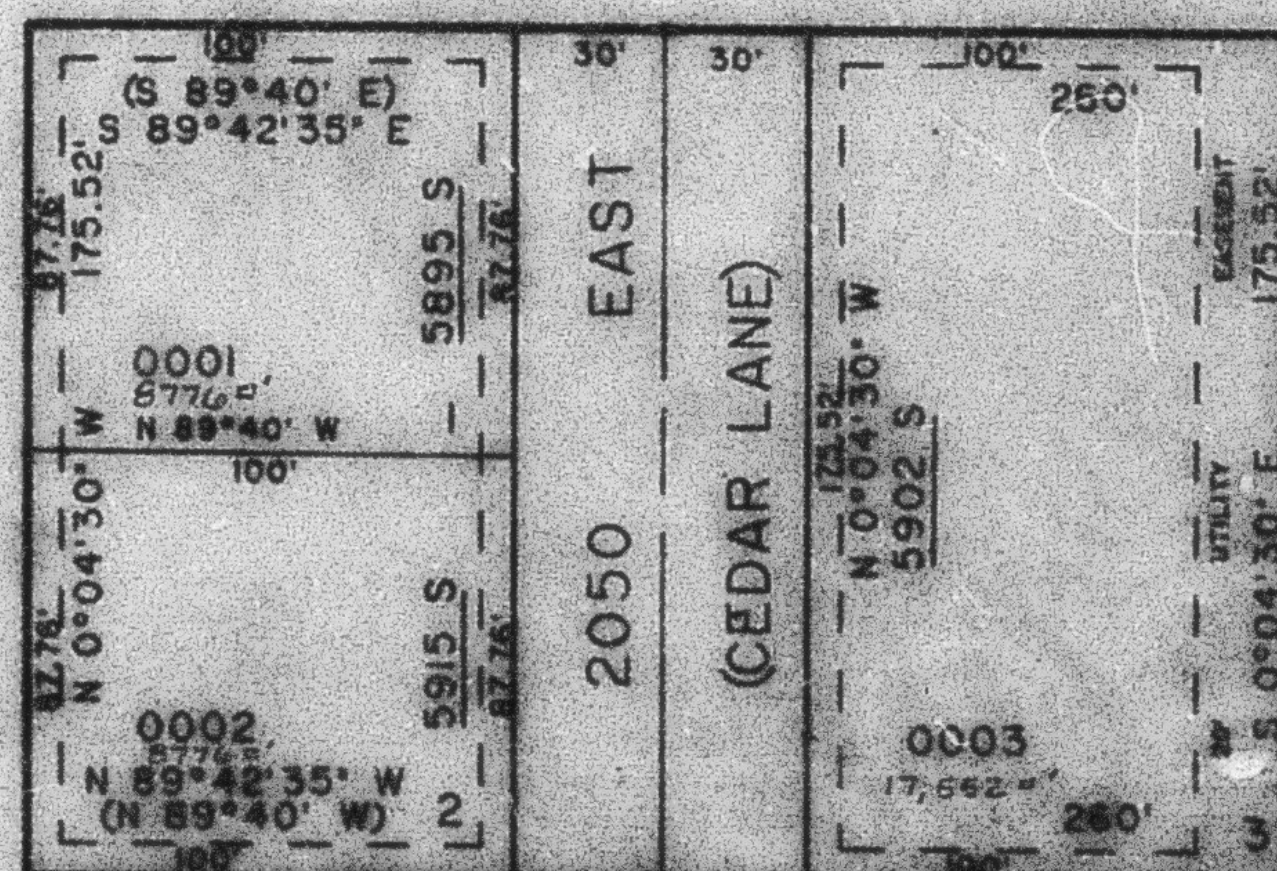
PREFIX 07-304

SCALE 1" TO 50'

EXCEPT WHERE OTHERWISE SHOWN  
ALL LOTS OWNED BY  
GRANT LYNN BYBEE & WIFE  
MERLENE SHAW

SEE PAGE 82

SEE PAGE 82



SEE PAGE 82

SEE PAGE 82

7. UTILITY AND DRAINAGE ELEMENTS  
EACH SIDE OF PROPERTY LINE AS  
INDICATED BY DASHED LINES.  
EXCEPT AS OTHERWISE SHOWN.

FOR COMPLETE END DATA  
SEE CH 14, DED. PLAT  
IN BOOK 29, PAGE 2.

POINT OF BEG.

CE COR NE 1/4  
SEC 22, T5N. R1W